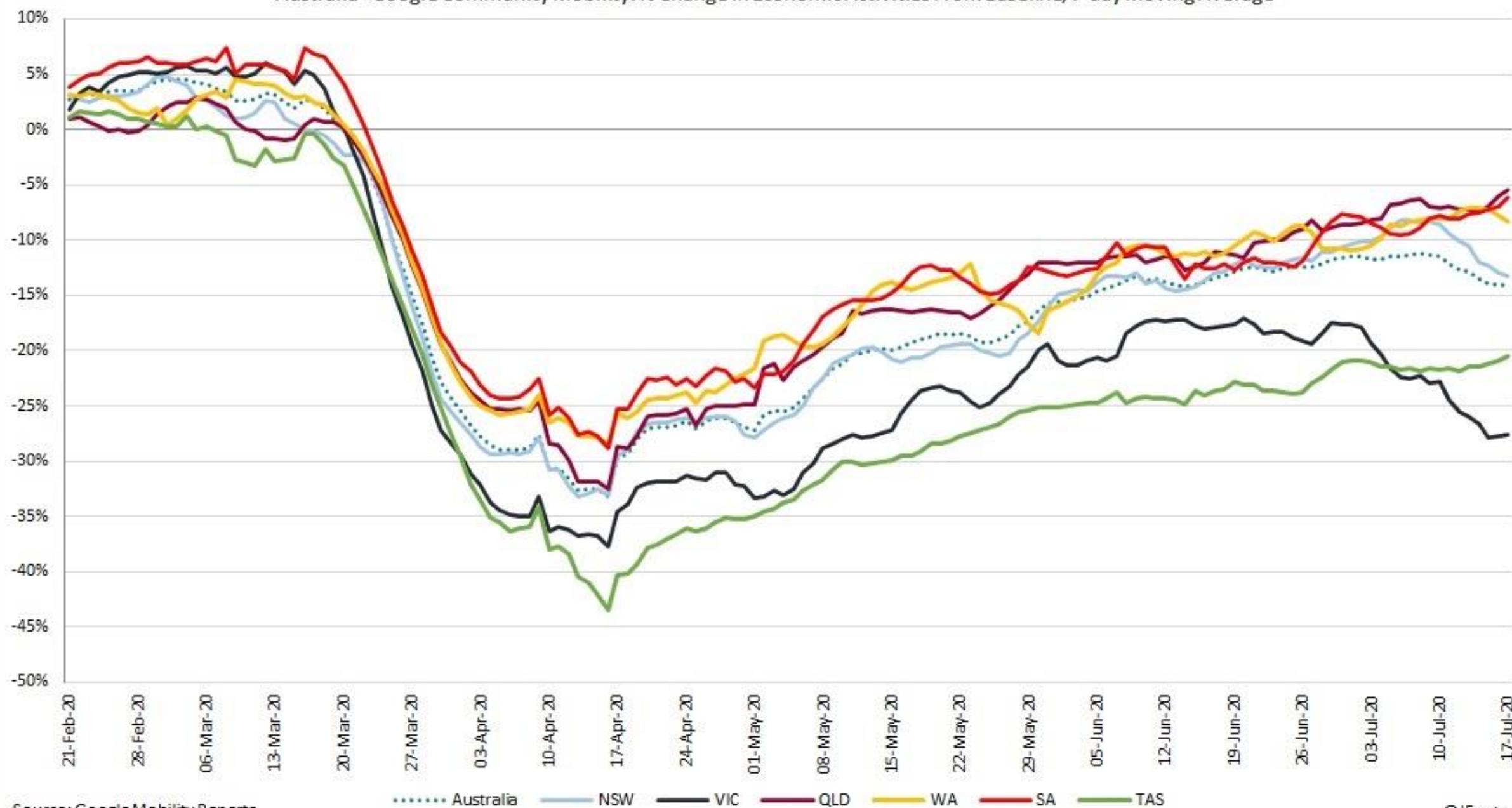


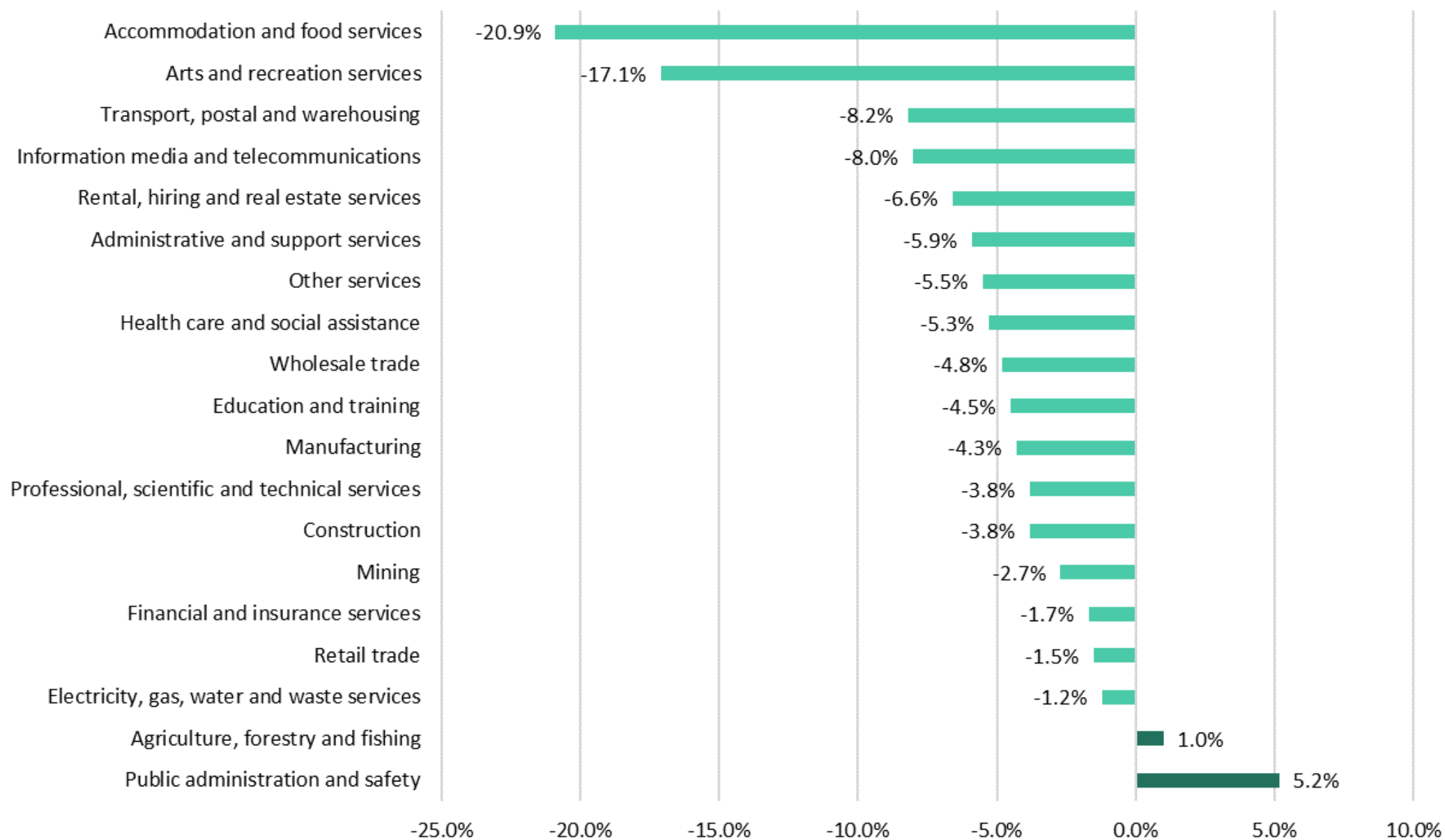
Australia - Google Community Mobility: % Change in Economic Activities From Baseline, 7-day Moving Average




Source: Google Mobility Reports

@JFosterFM


Change in Queensland's payroll jobs by industry since week ending March 14



Assuming JobKeeper extends beyond Sept? Yes													
	Latest*	By June 2020		By Sept 2020		By Dec 2020		June Q		Sept Q		Dec Q	
	UR %	Emp change from latest*	UR %	Emp change from latest*	UR %	Emp change from latest*	UR %	GDP/GSP/ GRP qq %	GDP/GSP/ GRP ann %	GDP/GSP/ GRP qq %	GDP/GSP/ GRP ann %	GDP/GSP/ GRP qq %	GDP/GSP/ GRP ann %
AUS	7.4	0	7.4	154,183	7.4	296,487	7.0	-9.3	-1.5	3.1	-3.5	1.6	-5.4
QLD	7.7	0	7.7	33,646	7.6	50,995	7.6	-6.6	-0.6	3.5	-2.1	-2.5	-4.8
LGA's													
Cairns	4.7	-7,730	10.3	-6,533	9.6	-5,709	9.3	-10.6	-3.0	2.9	-5.1	1.3	-7.0
Gold Coast	5.6	-26,873	8.5	-22,255	8.2	-19,226	8.5	-11.8	-2.2	4.8	-4.1	1.6	-6.0
Cassowary Coast	5.6	-655	7.3	-500	6.9	-522	7.6	-5.8	-0.6	1.7	-1.8	0.9	-2.9
Sunshine Coast	6.4	-11,646	10.0	-9,446	9.6	-8,131	9.8	-10.0	-1.7	3.9	-3.2	1.5	-4.8
Townsville	8.2	-4,459	8.1	-3,222	7.0	-2,779	6.8	-7.8	-1.1	3.1	-2.5	1.0	-3.8
Douglas	4.3	-1,042	16.1	-942	15.3	-867	14.7	-17.9	-4.6	4.2	-8.9	0.3	-12.7
Mackay	5.6	-5,014	8.8	-4,430	8.1	-4,150	7.8	-9.2	0.4	5.3	-0.6	1.1	-2.2
Whitsundays	5.8	-3,822	18.4	-3,644	17.7	-3,539	17.3	-12.9	-1.6	7.0	-3.3	0.6	-5.5
Ipswich	7.8	-7,016	11.4	-6,588	12.3	-3,001	10.4	-6.7	-0.8	2.2	-2.1	1.2	-3.2
Logan	7.9	-7,871	7.5	-5,916	7.3	-4,570	7.6	-8.7	-1.0	3.1	-2.8	1.3	-4.2
Toowoomba	4.3	-3,329	8.4	-2,441	7.6	-2,089	7.5	-7.1	-0.1	3.0	-1.3	1.1	-2.6
Tablelands	5.0	-542	6.5	-424	6.1	-414	6.6	-6.6	-1.2	2.2	-2.5	0.9	-3.6
Mareeba	7.2	-448	7.8	-331	7.3	-357	8.1	-5.9	-0.3	1.7	-1.6	1.3	-2.7

* Latest; AUS & QLD = ABS s.a. June 2020, others = Conus SALM Trend Dec 2019

Sources; ABS, NIEIR, DESE, QLD Treasury, REMPLAN, Conus

Assuming JobKeeper extends beyond Sept?													
No													
	Latest*	By June 2020		By Sept 2020		By Dec 2020		June Q		Sept Q		Dec Q	
	UR %	Emp change from latest*	UR %	Emp change from latest*	UR %	Emp change from latest*	UR %	GDP/GSP/ GRP qq %	GDP/GSP/ GRP ann %	GDP/GSP/ GRP qq %	GDP/GSP/ GRP ann %	GDP/GSP/ GRP qq %	GDP/GSP/ GRP ann %
AUS	7.4	0	7.4	154,183	7.4	-119,418	9.5	-9.3	-1.5	3.1	-3.5	0.3	-5.7
QLD	7.7	0	7.7	33,646	7.6	-35,763	10.0	-6.6	-0.6	3.5	-2.1	-3.4	-5.1
LGA's													
Cairns	4.7	-7,730	10.3	-6,533	9.6	-9,053	12.4	-10.6	-3.0	2.9	-5.1	0.2	-7.2
Gold Coast	5.6	-26,873	8.5	-22,255	8.2	-32,324	11.8	-11.8	-2.2	4.8	-4.1	0.4	-6.3
Cassowary Coast	5.6	-655	7.3	-500	6.9	-938	9.8	-5.8	-0.6	1.7	-1.8	0.4	-3.0
Sunshine Coast	6.4	-11,646	10.0	-9,446	9.6	-13,974	12.6	-10.0	-1.7	3.9	-3.2	0.4	-5.1
Townsville	8.2	-4,459	8.1	-3,222	7.0	-5,890	9.4	-7.8	-1.1	3.1	-2.5	0.2	-4.0
Douglas	4.3	-1,042	16.1	-942	15.3	-1,199	18.9	-17.9	-4.6	4.2	-8.9	-0.2	-12.8
Mackay	5.6	-5,014	8.8	-4,430	8.1	-5,201	9.1	-9.2	0.4	5.3	-0.6	-0.2	-2.5
Whitsundays	5.8	-3,822	18.4	-3,644	17.7	-3,906	18.8	-12.9	-1.6	7.0	-3.3	-0.6	-5.8
Ipswich	7.8	-7,894	12.2	-7,466	13.0	-6,538	12.9	-6.7	-0.8	2.2	-2.1	0.6	-3.4
Logan	7.9	-7,871	7.5	-5,916	7.3	-9,569	10.1	-8.7	-1.0	3.1	-2.8	0.5	-4.4
Toowoomba	4.3	-3,329	8.4	-2,441	7.6	-4,326	9.9	-7.1	-0.1	3.0	-1.3	0.3	-2.8
Tablelands	5.0	-542	6.5	-424	6.1	-772	9.1	-6.6	-1.2	2.2	-2.5	0.3	-3.7
Mareeba	7.2	-448	7.8	-331	7.3	-648	10.3	-5.9	-0.3	1.7	-1.6	0.4	-2.9

* Latest; AUS & QLD = ABS s.a. June 2020, others = Conus SALM Trend Dec 2019

Sources; ABS, NIEIR, DESE, QLD Treasury, REMPLAN, Conus

December 2019				May 2020			
Electorate	State	Party	%	Electorate	State	Party	%
Lingiari	NT	ALP	15.0%	Lingiari	NT	ALP	19.4%
Hinkler	Qld.	LNP	10.4%	Hinkler	Qld.	LNP	16.6%
Spence	SA	ALP	10.0%	Leichhardt	Qld.	LNP	14.8%
Grey	SA	LP	9.3%	Spence	SA	ALP	14.7%
Durack	WA	LP	8.6%	Wide Bay	Qld.	LNP	14.5%
Page	NSW	NATS	8.6%	Page	NSW	NATS	14.1%
Leichhardt	Qld.	LNP	8.2%	Calwell	Vic.	ALP	14.1%
Wide Bay	Qld.	LNP	8.2%	Richmond	NSW	ALP	13.9%
Braddon	Tas.	LP	8.1%	Grey	SA	LP	13.2%
Parkes	NSW	NATS	7.8%	Moncrieff	Qld.	LNP	13.0%